

## 山羊抗兔 IgG 重链二抗, HRP 标记(规避轻链干扰)

HRP, Goat Anti-Rabbit IgG HCS



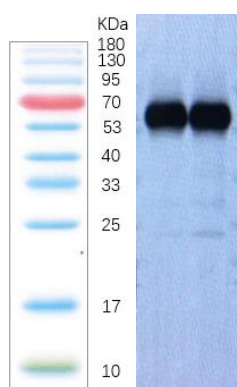
产品详情

产品货号	产品名称	储存条件	保质期
IM72003	山羊抗兔 IgG 重链二抗, HRP 标记(规避轻链干扰)	-20℃	1 年

## Product Information :

Product Name	山羊抗兔 IgG 重链二抗, HRP 标记(规避轻链干扰)
Applications	WB, IP, HRP
Isotype	Goat IgG
Reactivity	Rabbit
Formulation	Liquid
Concentration	0.5mg/ml
Storage	Store at -20°C. Avoid repeated freeze/thaw cycles.
Note	Contain sodium azide.
Background	Secondary antibodies are available conjugated to enzyme, biotin or fluorophore for use in a variety of antibody-based applications including Western Blot, ImmunoHistoChemistry, ImmunoFluorescence, Flow Cytometry and ELISA. We offer high quality secondary antibodies from goat, rabbit and donkey sources for your each application.
Application Notes	The suggested dilution ratio is: WB: 1:1,000–1:10,000 (1:2000 optimal), IP: 1:1,000–1:10,000 (1:2000 optimal). In rare cases, due to the degradation of heavy chains, there are weak bands at 25 kDa. It is

Application Notes	recommended to use the following method to reduce the non-specific interference background:Increasing the concentration of target protein in the sample, reducing the use of primary antibody in Pull Down, or optimizing the dilution of WB antibody and ECL exposure conditions.
Storage Buffer	Liquid in PBS, pH 7.4, containing 1% BSA as stablizer and 50% Glycerol.
Storage Instructions	Stable for one year at -20℃ from date of shipment. For maximum recovery of product, centrifuge the original vial after thawing and prior to removing the cap. Aliquot to avoid repeated freezing and thawing.
Note	The product listed herein is for research use only and is not intended for use in human or clinical diagnosis. Suggested applications of our products are not recommendations to use our products in violation of any patent or as a license. We cannot be responsible for patent infringements or other violations that may occur with the use of this product.
Example	Sample:Rabbit IgG, Dilution factor:1:2000, Exposure time: 30s



### 注意事项:

1. 我司生产的生化试剂如无特殊标注, 基本为非无菌包装, 若用于细胞实验, 请提前做好预处理。需低温保存的产品, 一旦配成溶液, 请分装保存, 避免反复冻融造成的产品失效。
2. 本产品仅限于专业人员的科学研究用, 不得用于临床诊断或治疗, 不得用于食品或药品, 不得存放于普通住宅内。
3. 为了您的安全和健康, 请穿实验服并戴一次性手套操作。
4. 实验结果受多种因素影响, 相关处理仅限于产品本身, 不涉及其他赔偿。

免责声明: 所有产品仅用作科学研究, 不得用于其他用途! 本公司将不为任何不正常使用此产品时所发生的意外负责。

北京伊事达科技有限公司

电话: 13564444959

官网: [www.followme-shop.com](http://www.followme-shop.com)

地址: 北京市海淀区东北旺西路58号尚科办公社区C区一楼



公众号



客服